

From the Stone Age to the Electronic Age:  
The Saga of a Cartographer in the  
Twentieth Century and Beyond.

By  
Norman J. W. Thrower

Occasional Paper No. 8  
September 2004

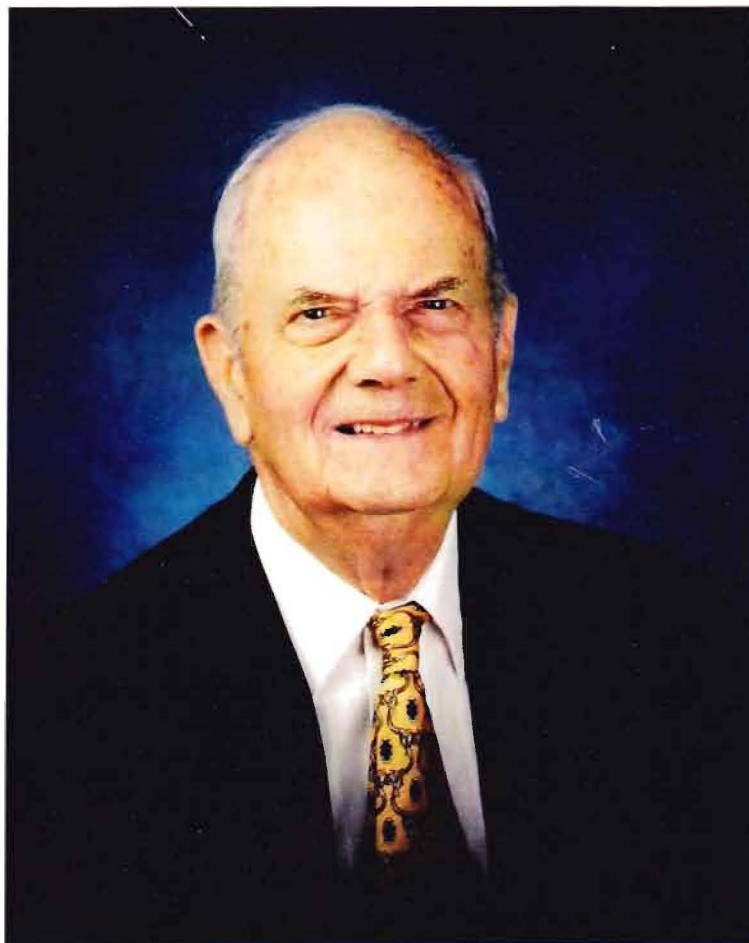
California Map Society

The California Map Society was founded in 1978, an outgrowth of the historically-oriented Sir Francis Drake Quadracentennial Commission, State of California. The focus of the Society has been on maps of California, mapping in California, map collections and map collecting. As such, the Society is not centered on a single cartographic aspect or group; rather it retains a diversified membership and reaches out to all map enthusiasts.

Everyone is welcome at our Society's meetings, and costs are nominal. Visit our website, [www.californiamapsociety.org](http://www.californiamapsociety.org), for information about recent and upcoming meetings, membership, and more.

### **Colophon**

© 2004 Published by the California  
Map Society. All rights reserved.



Norman J. W. Thrower  
Received the Constantine Panunzio Award  
for being the most productive Emeritus Professor  
of the nine University of California's  
campuses, 1998-1999.

## Table of Contents

	Page/s
Captions for maps by Norman J. W. Thrower included in this publication	5
Preface, David Kalifon, CMS President	6
Introduction, William Warren, Past President CMS	7
List of publications of the California Map Society	8
“From the Stone Age to the Electronic Age: The Saga of a Cartographer in the Twentieth Century and Beyond,” by Norman J. W. Thrower	9-19
References	19-24
Selected Bibliography	25-32

